

hneftafl

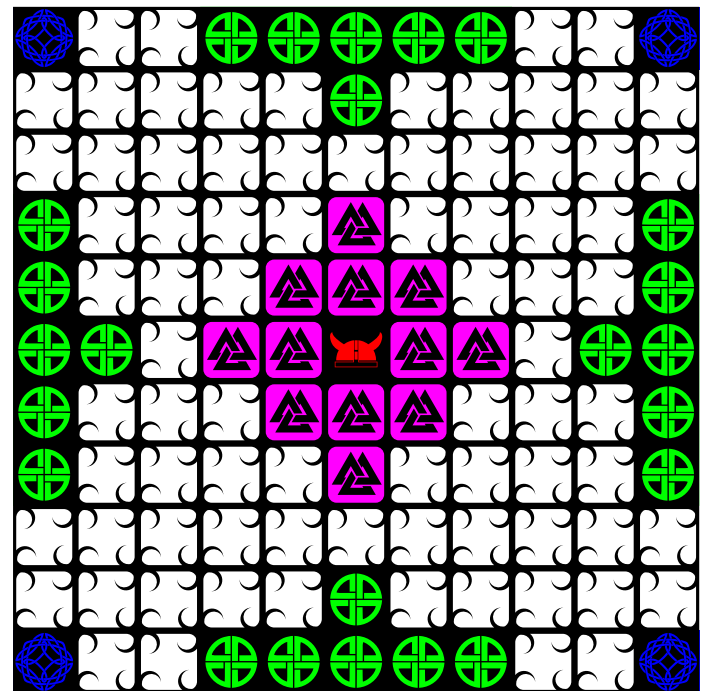
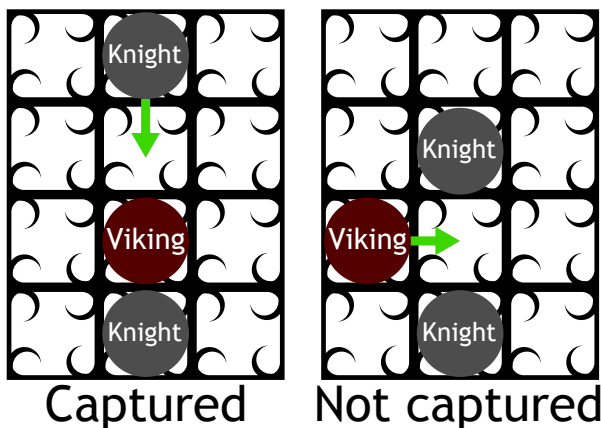
Hneftafl is an old Viking game that is played with two players. One player is the Viking army that will protect their king and try to bring him to the corners of the field (blue squares). The other player is the army of knights that will try to capture the Viking king.

The board is divided into 11 by 11 squares which are possible positions of the playing pieces. The 24 knights start on the four sides of the board (green squares). The Viking king starts in the center of the board (red square), surrounded by 12 Vikings (pink squares).

The game starts by placing all the pieces into their starting position. Then, the Vikings are the first to move. You can move one piece every turn. All pieces move in a horizontal or vertical line as far as they choose (like a rook in chess). All pieces can pass through the center square, but only the king can stop there. The king is also the only piece that can stop on the corners of the field.

Capturing pieces

Pieces of your opponent can be captured by actively surrounding them on two sides. A piece is only captured if you can move a piece to surround the piece you want to capture. It is thus possible to place a piece inbetween two pieces of your opponent without being captured.



The board

Capturing the king

The king is captured by completely surrounding him. If the king is on one of the squares immediately next to the center square, or on the edge of the board, it only takes three knights to capture him.

